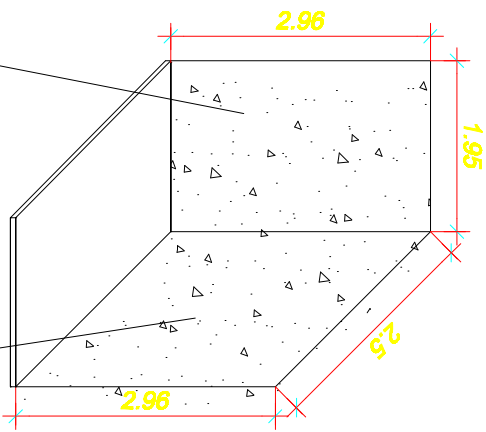
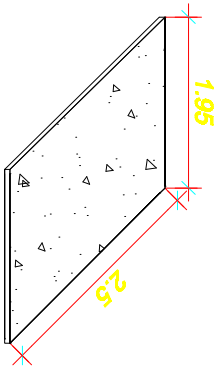


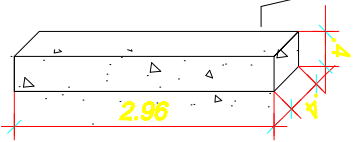
PAREDES (1,95.2,96)+(2,50.2,96).2 = 26,34m²



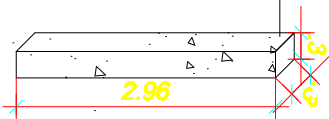
PISO E TETO (1,95.2,50).2= 9,75m²



PILAR (0,40.2,96).4= 4,74m²



PILAR (0,30.2,96).3= 2,66m²



1

POÇO DO ELEVADOR

AREA TOTAL - 43,49,00m²